



WORX RACING SEADOO SPARK STEERING KIT

PART # - WR06014

MODELS: SEADOO SPARK

INSTALLATION INSTRUCTIONS

IMPORTANT: READ ALL INSTRUCTIONS BEFORE PROCEEDING WITH INSTALLATION

Tools necessary for installation:

3mm, 4mm, 5mm allen key or sockets, 8mm,
10mm socket, T30 torx socket, extension, ratchet,
10mm open end spanner, side cutter, long nose pliers,
grease, loctite

Parts Supplied:

1 x **WORX** Spark steering system
1 x Trigger assembly
1 x Throttle cable
1 x Throttle actuator bracket (base/top)
2 x Handle bar bracket (top/base)
4 x M8 x 50
2 x M6 x 35
1 x start/stop switch holder

1. Make sure ski is secure and on a flat surface. Remove lanyard and disconnect battery.
2. Remove front cowling by removing torx bolt under front cover (#1) and pushing clip down at top rear of cover (#2). Pull piece forward to access steering system. Remove centre bar pad by pulling centre bar cover at rear (underside of steering) towards the rear of the ski (#3) then lift up to expose handle bar switch covers and screws. Remove LH and RH handle bar switch covers by removing top grub screws (#4) and bottom torx bolts (#5).
3. Disconnect start/stop switch and drop connector into steering column. Disconnect and remove TAS connector (#6) and drop connector into steering column. Remove 2 x M6 hex screws securing steering column (#7). Leave the rear cable bracket and steering cable in place. Cut locking tie that secures wire harness to steering column (#8).
4. Pull steering column upwards out of support (#9). Be careful not to damage wiring harness, connectors and O.T.A.S. magnet bracket.
5. Remove O.T.A.S. Magnet bracket from steering column using long nose pliers. Be extremely careful removing this as it is very easily broken (#10). It can prove easier to cut the back of the old steering stem to access this. Then install into WORX steering stem.
6. You will need to remove the TAS bracket from the WORX steering stem before installation (#11). Grease top and bottom wear sleeve (OEM steering bush) (#11) and fit on too steering stem. Fit stem into ski while feeding steering harness inside stem. Take your time fitting to make sure all bushes are located properly (#12a/ #12b) and feed wire harness back up the centre of the stem (#11). Also be careful of O.T.A.S. magnet bracket to not knock it off. The

TAS connector plug will need to come thru the large hold half way down the stem shaft (#13). The start/stop will need to be fed up through the top hole to mount onto the handle bars.

7. Bolt steering cable bracket to the steering stem using supplied M6 x 35 socket bolts (#14). Refit TAS base to steering stem (#15). Use a small amount of loctite on bolts.
8. Run throttle cable down thru top of steering stem and out centre stem hole. Fit cable end into bracket and 10mm lock nuts on cable (#16). Fit TAS onto base locate throttle cable end into actuator (#17) and bolt top bracket on to hold actuator in place (#18). Be careful not to over tighten bolts to crush actuator. Use a small amount of loctite on bolts
9. Fit handle bar using bar mounts and supplied M8 x 50 button head bolts (#19). Use a small amount of loctite on handle bar bolts. Once bars are fitted check correct steering operation.
10. Push red OEM start/stop button into switch housing then locate start/stop switch into housing (#20).
11. Fit throttle lever and adjust cable length so TAS can return to idle and will get 100% throttle. Tighten 10mm lock nuts on cable (#21). Fit start/stop switch to handle bar in position both to suit your riding style.
12. Check all bolts are tight and plug connections fitted correctly. Make sure there is enough wire harness length when steering is turned at full lock. Check correct steering operation and adjustment. Secure excess wiring with cable ties(#22). Replace front cover. Reconnect battery.

Note: TAS = (Throttle actuator switch)

Thank you for purchasing **Worx Racing components** products. We firmly believe that **Worx Racing Components** products are among the finest watercraft parts available. A great deal of time and effort has gone into the design and development of this product to ensure that it will perform to the highest standard and that installation is a relatively straight forward and simple procedure. If you have any questions or comments on the performance and/or installation of our products please contact us at the numbers listed on page one or through your local **Worx** dealer.

www.worx.com.au / info@worx.com.au



(#1)



(#2)



(#3)



(#4)



(#5)



(#6)



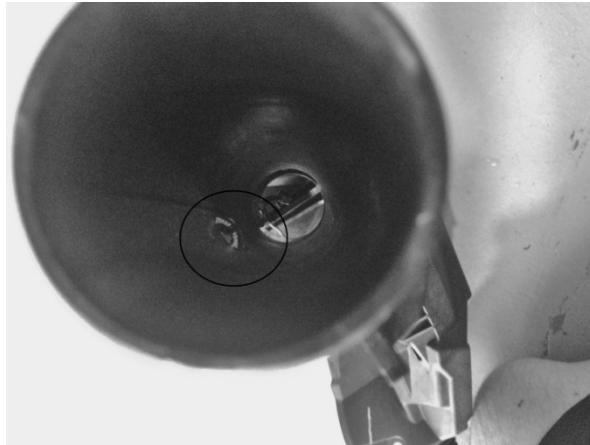
(#7)



(#8)



(#9)



(#10)



(#11)



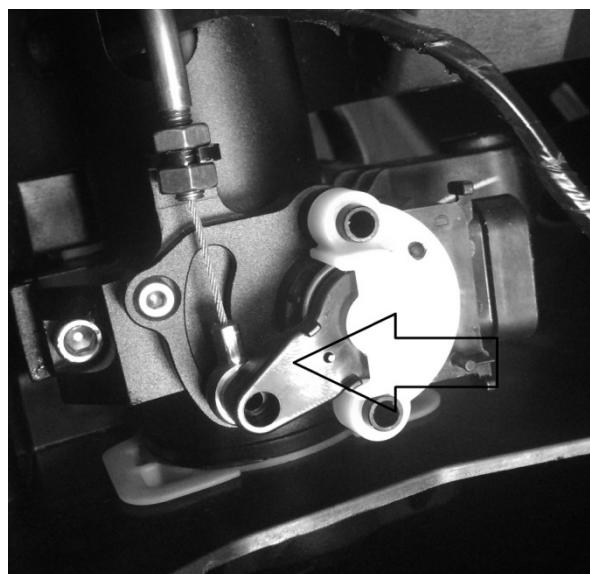
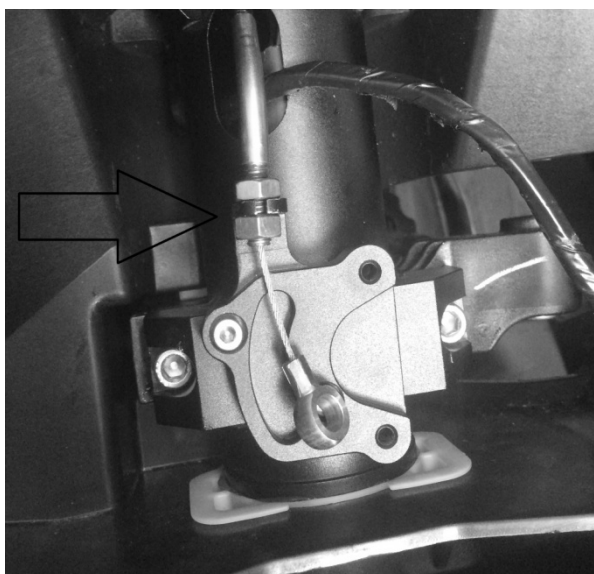
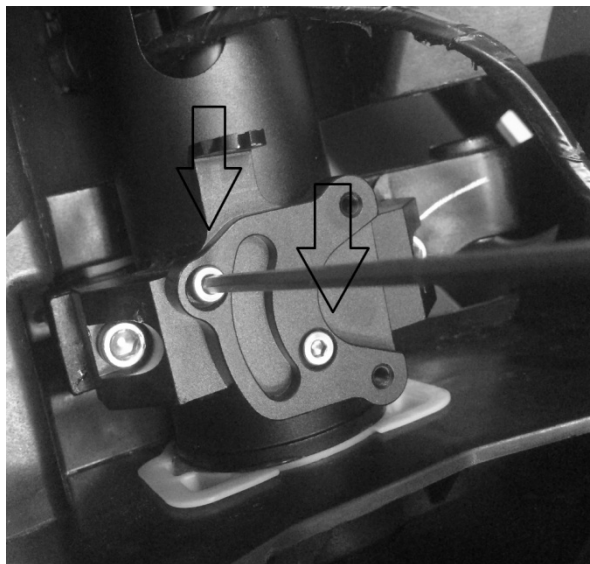
(#12a)

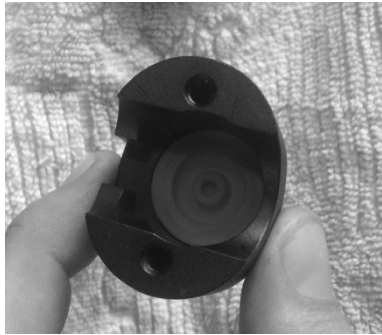


(#12b)

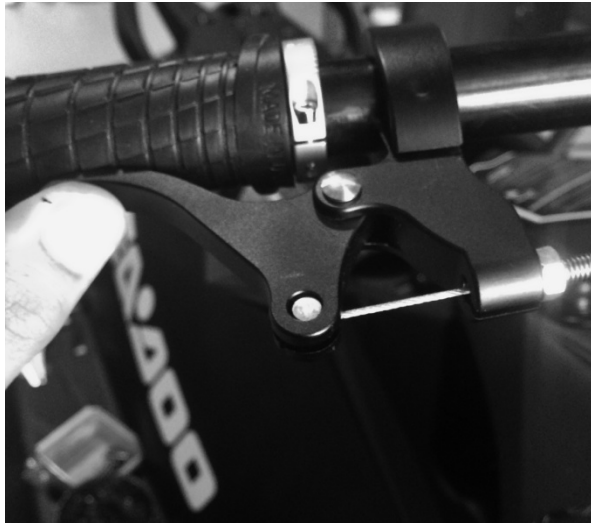
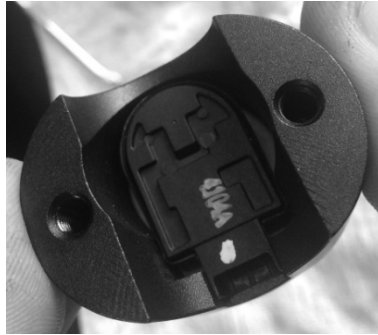


(#13)

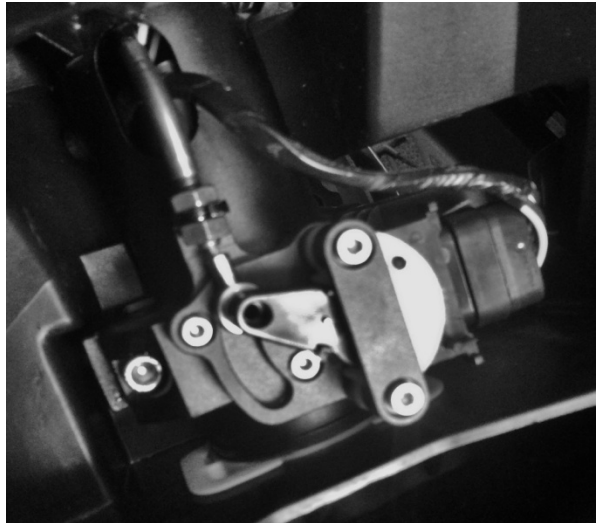




(#20)



(#21)



(#22)